

2007 Fall Enrollment: 3,904 (All Students Registered for Credit Hours)

Students by Class Level

	<u>Number</u>	<u>% of Total</u>
First-Time Freshman (FF's)	804	20.6%
Freshman (1's & 2's)	1,192	30.5%
Sophomore (3's & 4's)	887	22.7%
Juniors (5's & 6's)	305	7.8%
Seniors (7's & 8's)	353	9.0%
Non-Degree	273	7.0%
Graduate	90	2.3%
Total Undergraduate	3,814	97.7%
Total Graduate	90	2.3%
Grand Total	3,904	100.0%

Enrollment by Level and Time Status

Undergraduate

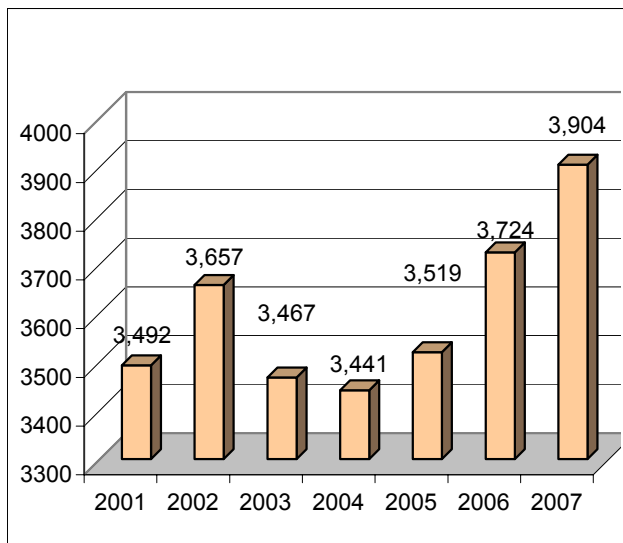
Full-Time	2,313	60.6%
Part-Time	1,501	39.4%

Graduate

Full-Time	0	0.0%
Part-Time	90	2.3%

Total Full-Time	2,313	59%
Total Part-Time	1,591	41%

Historical Fall Semester Enrollment



	<u>Number</u>	<u>% of Total</u>
African American	202	5.2%
American Indian	28	0.7%
Asian American	34	0.9%
Hispanic American	183	4.7%
Multi Racial	0	0.0%
Other	115	2.9%
Un-Reported	0	0.0%
Total Ethnic	562	14.4%

	<u>Graduate</u>	<u>Undergraduate</u>	
Men	44	1582	1,626
Women	46	2232	2,278
Total	90	3,814	3,904

New Student Enrollment

	<u>Fall 2007</u>	<u>Fall 2006</u>	<u># Change</u>
Beginner	782	706	76
Re-Entry	276	264	12
Reg. Tran	47	48	-1
Transfer	181	213	-32
Prev ND	6	10	-4
Non Degr	248	170	78
Total New	1,540	1,411	129

Resident Status: Undergraduates

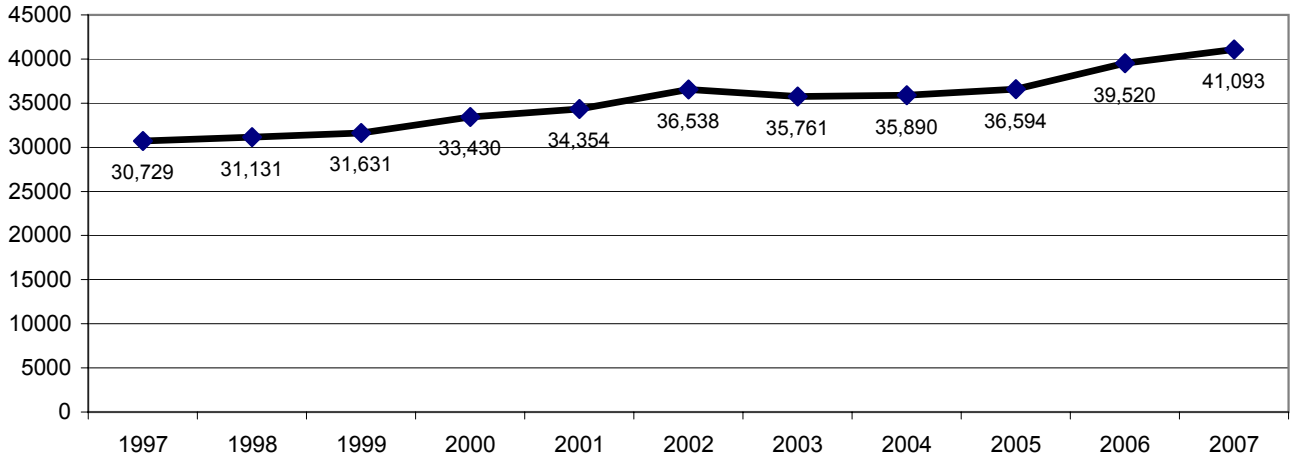
	<u>Fall 2007</u>	<u>Fall 2006</u>	<u># Change</u>
Resident	3,822	3,480	342
Nonresident	82	39	43

Mean and Median Age: Undergraduates

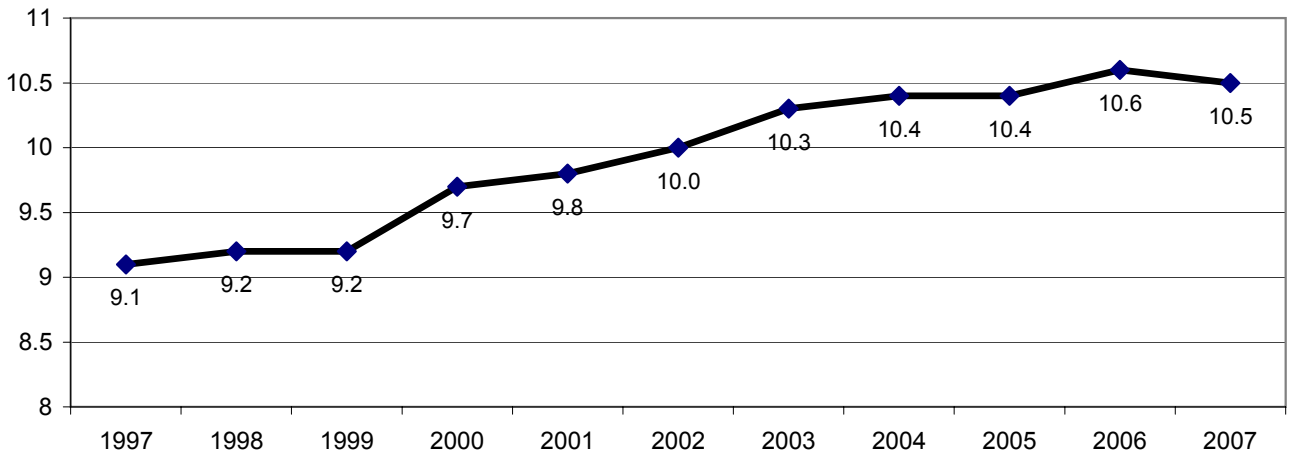
	<u>Fall 2007</u>	<u>Fall 2006</u>	
Full-Time	23	23	<i>Mean</i>

	20	21	Median
All Under	25	26	Mean
	22	22	Median

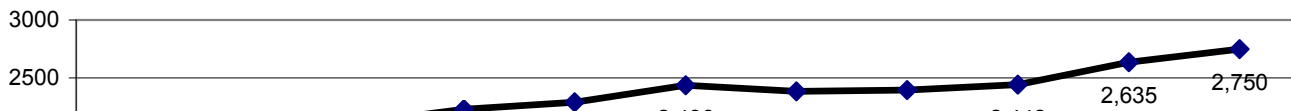
Total Credit Hours 1997-2007

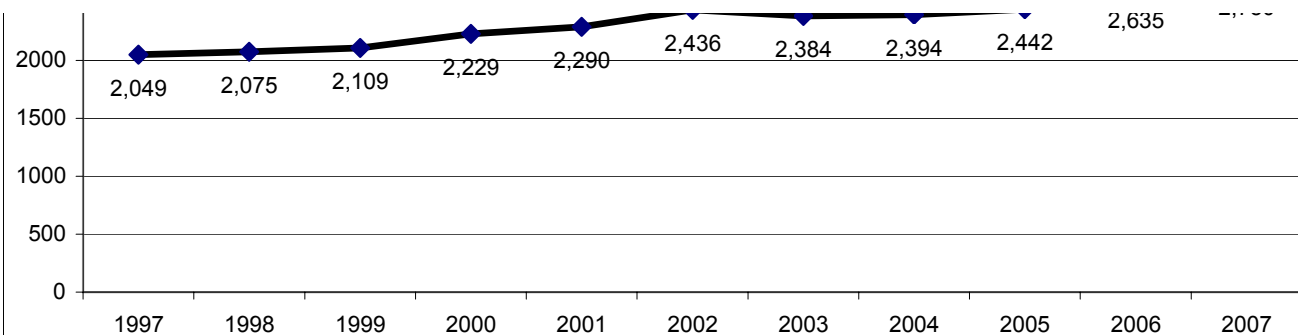


Mean Credit Hours 1997-2007



FTE Credit Hours 1997-2007





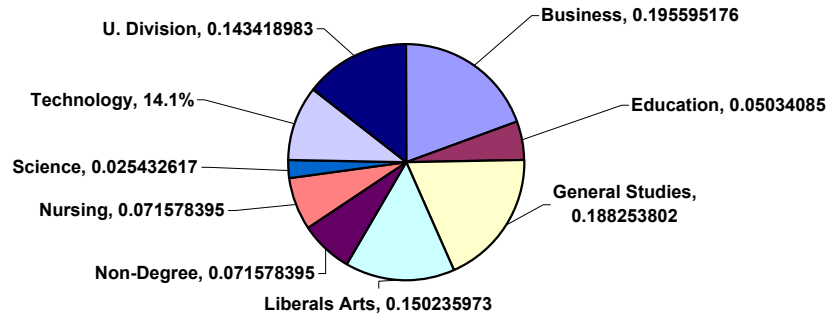
Enrollment by Age and Level

Student Age	0-16	17-19	20-21	22-23	24-25	26-30	31-35	36 & over	Total
Undergraduate	32	1087	714	484	255	468	238	536	3,814
Graduate	0	0	0	0	11	25	16	38	90
Total	32	1087	714	484	266	493	254	574	3,904

Total Enrollment Comparison by School	Fall 2007		Fall 2006		Change		Percent
	Count	Percent	Count	Percent	Count		≥ 10 %

Agriculture	0	0.00%	9	0.24%	-9	#####	(-)
Architectural Technology	27	0.69%	17	0.46%	10	58.82%	(+)
Aviation Technology	0	0.00%	3	0.08%	-3	#####	(-)
Building Construction Technology	37	0.95%	29	0.78%	8	27.59%	(+)
Business	595	15.24%	449	12.06%	146	32.52%	(+)
Civil Engineering Technology	11	0.28%	7	0.19%	4	57.14%	(+)
Consumer Family Science	0	0.00%	6	0.16%	-6	#####	(-)
Computer Graphic Technology	0	0.00%	2	0.05%	-2	#####	(-)
Computer & Information Technology	104	2.66%	73	1.96%	31	42.47%	(+)
Engineering	0	0.00%	10	0.27%	-10	#####	(-)
Education	192	4.92%	222	5.96%	-30	-13.51%	(-)
Electrical Engineering Technology	42	1.08%	38	1.02%	4	10.53%	(+)
General Studies	718	18.39%	1,441	38.69%	-723	-50.17%	(-)
Graduate School	90	2.31%	89	2.39%	1	1.12%	
Health Sciences	0	0.00%	19	0.51%	-19	#####	(-)
Industrial Engineering Technology	8	0.20%	6	0.16%	2	33.33%	(+)
Management	0	0.00%	10	0.27%	-10	#####	(-)
Mechanical Engineering Technology	38	0.97%	65	1.75%	-27	-41.54%	(-)
Engineering Technology	128	1.42%	64	1.72%	64	100.00%	(+)
Nursing	273	6.99%	248	6.66%	25	10.08%	(+)
Physical Education	0	0.00%	0	0.00%	0	0.00%	
Science	97	2.48%	82	2.20%	15	18.29%	(+)
Liberal Arts	573	14.68%	428	11.49%	145	33.88%	(+)
Supervision	151	3.87%	116	3.11%	35	30.17%	(+)
University Division	547	14.01%	100	2.69%	447	447.00%	(+)
Non-Degree	273	6.99%	191	5.13%	82	42.93%	(+)
Total	3,904	100.00%	3,724	100.00%	180	4.83%	

**Fall 2007
Undergraduate Enrollment by School**



Geographic Distribution of Enrollment by Heads, Credit Hours, Age, and Time Status

Origin	Headcount	Percent	Mean Hour	Total Hours	Mean Age	Percent FT
Indiana Counties						
La Porte	1,602	41.0%	10.42	16,691	27	58%
Porter	1,581	40.5%	10.53	16,651	25	61%
Lake	215	5.5%	11.18	2,404	24	68%
Starke	164	4.2%	10.47	1,717	25	62%
Jasper	90	2.3%	9.71	874	23	49%
St. Joseph	75	1.9%	10.03	752	25	55%
Pulaski	40	1.0%	7.63	305	23	38%
Marshall	17	0.4%	13.12	223	25	82%
Elkhart	8	0.2%	11.63	93	26	63%
Marion	8	0.2%	12.75	102	26	88%
Tippecanoe	7	0.2%	12.71	89	22	86%
Steuben	6	0.2%	14.00	84	21	100%
Fulton	4	0.1%	10.75	43	24	75%
Allen	3	0.1%	15.00	45	26	100%
Hamilton	3	0.1%	12.33	37	19	100%
Newton	3	0.1%	13.00	39	25	100%
White	3	0.1%	14.00	42	20	100%
Delaware	2	0.1%	13.50	27	21	100%
Lawrence	2	0.1%	16.50	33	19	100%
Noble	2	0.1%	7.50	15	22	0%
Boone	1	0.0%	3.00	3	28	0%
Carroll	1	0.0%	15.00	15	35	100%
Grant	1	0.0%	6.00	6	22	0%
Hancock	1	0.0%	15.00	15	20	100%
Hendricks	1	0.0%	13.00	13	19	100%

Kosciusko	1	0.0%	16.00	16	18	100%
Madison	1	0.0%	15.00	15	18	100%
Monroe	1	0.0%	12.00	12	26	100%
Morgan	1	0.0%	12.00	12	19	100%
Orange	1	0.0%	13.00	13	19	100%
Spencer	1	0.0%	13.00	13	18	100%
Sullivan	1	0.0%	12.00	12	27	100%
Wabash	1	0.0%	16.00	16	20	100%
Whitley	1	0.0%	15.00	15	21	100%

Out of State

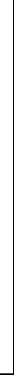
Illinois	15	0.4%	13.40	201	22	80%
Michigan	14	0.4%	11.71	164	26	79%
Florida	2	0.1%	9.50	19	25	50%
Georgia	2	0.1%	9.50	19	22	50%
Nebraska	2	0.1%	12.00	24	19	50%
Arizona	1	0.0%	12.00	12	21	100%
Kansas	1	0.0%	9.00	9	18	0%
New York	1	0.0%	3.00	3	62	0%
Pennsylvania	1	0.0%	9.00	9	22	0%
Rhode Island	1	0.0%	12.00	12	29	100%
Tennessee	1	0.0%	15.00	15	21	100%
Texas	1	0.0%	12.00	12	19	100%
Virginia	1	0.0%	3.00	3	37	0%
Washington	1	0.0%	12.00	12	22	100%
Puerto Rico	1	0.0%	15.00	15	21	100%

International

Brazil	2	0.1%	12.00	24	20	100%
China	2	0.1%	10.50	21	26	50%
Ghana	1	0.0%	17.00	17	19	100%
Nigeria	1	0.0%	12.00	12	27	100%
Hong Kong	1	0.0%	15.00	15	21	100%
Sri Lanka	1	0.0%	12.00	12	24	100%
South Korea	1	0.0%	15.00	15	24	100%
Zambia	1	0.0%	6.00	6	39	0%
Totals/Means	3,904	100%	10.53	41,093	25	60%

|

|



Education	5.0%	192
General Studies	18.8%	718
Liberals Arts	15.0%	573
Non-Degree	7.2%	273
Nursing	7.2%	273
Science	2.5%	97
Tech	10.4%	395
U. Division	14.3%	547
Total Under	100.00%	3,814